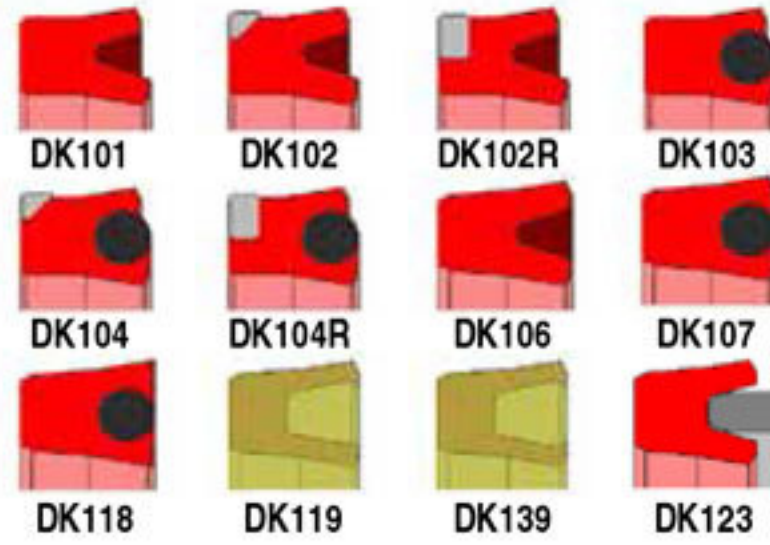
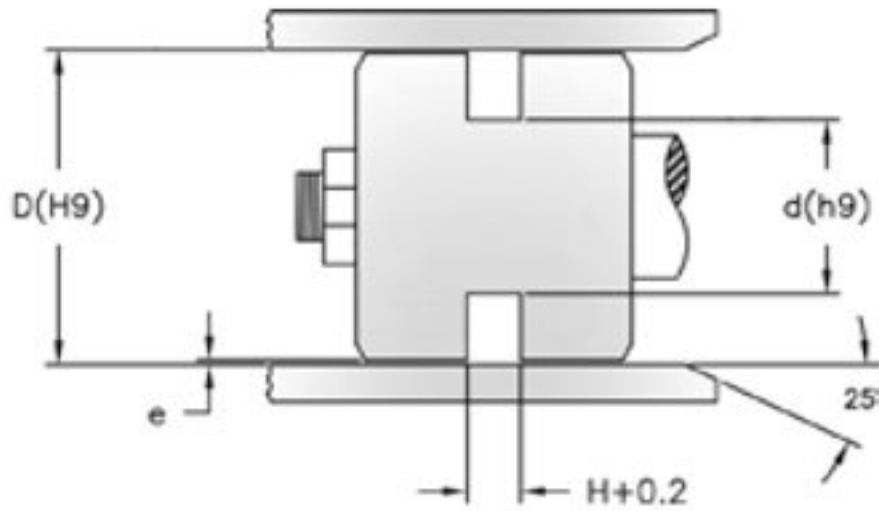


PISTON SEALS

U-Seal



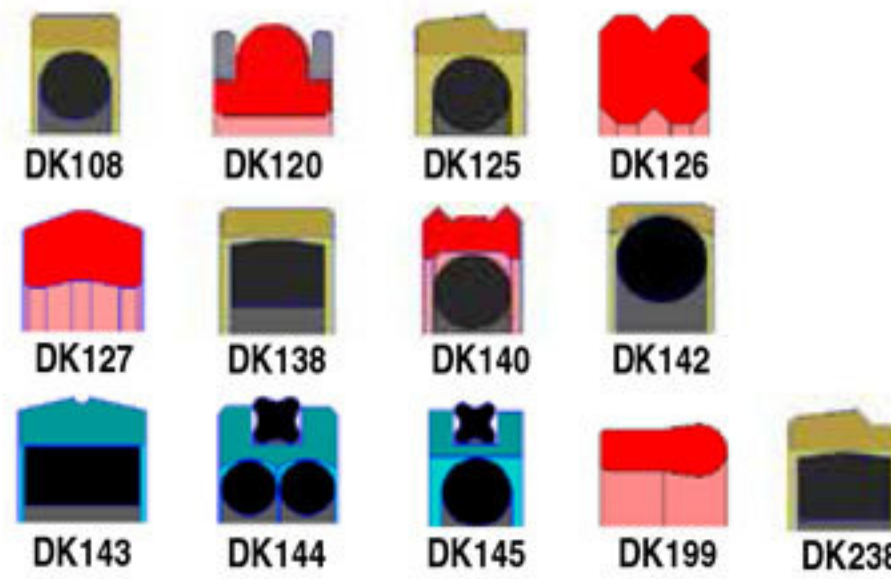
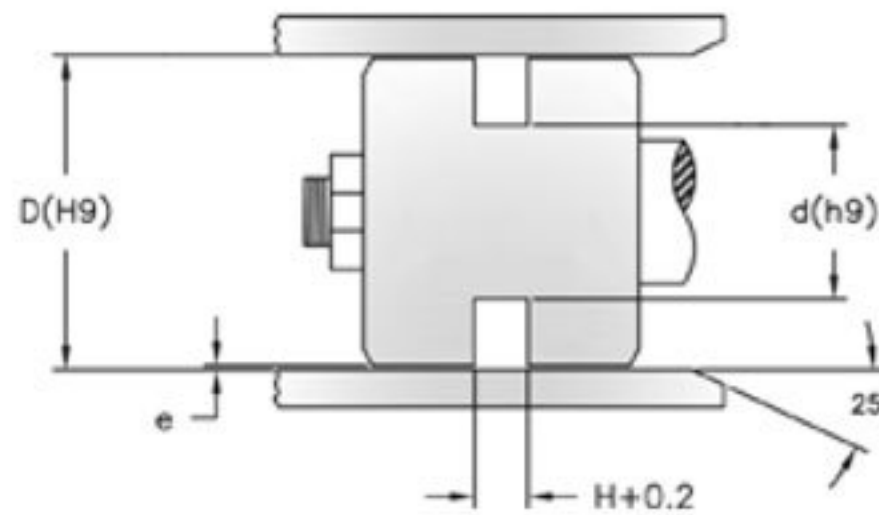
Application: Hydraulic single-acting piston seals
Material: Urethane, NBR, PTFE, Fluorocarbon

Standard Recommended Dimensions

D (Range)	d	H
15 - 25	D - 8	6
25.1 - 50	D - 10	7
50.1 - 75	D - 12	8
75.1 - 150	D - 15	10
150.1 - 300	D - 20	12
300.1 - 450	D - 25	18
450.1 - 575	D - 30	20

All Dimensions Are Millimeters

Two Piece Seal



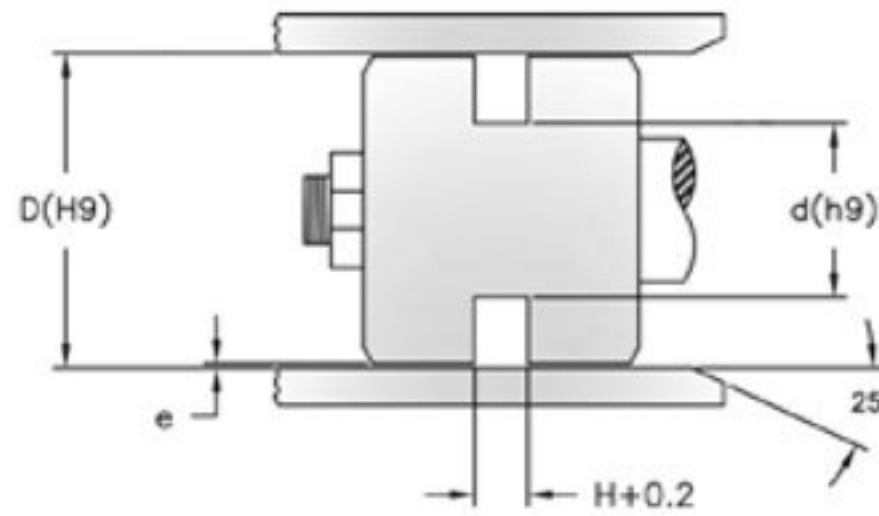
Application: Hydraulic double-acting piston seals
Material: Urethane, NBR, PTFE, Fluorocarbon

Standard Recommended Dimensions

D (Range)	d	H
10 - 15	D - 4.9	2.2
15.1 - 40	D - 7.5	3.2
40.1 - 80	D - 11	4.2
80.1 - 135	D - 15.5	6.3
135.1 - 300	D - 21	8.1
300.1 - 575	D - 24.5	8.1

All Dimensions Are Millimeters

Two Piece Seal Step-Cut



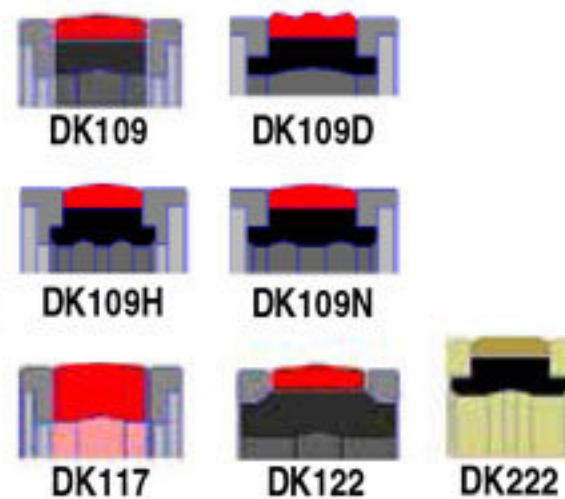
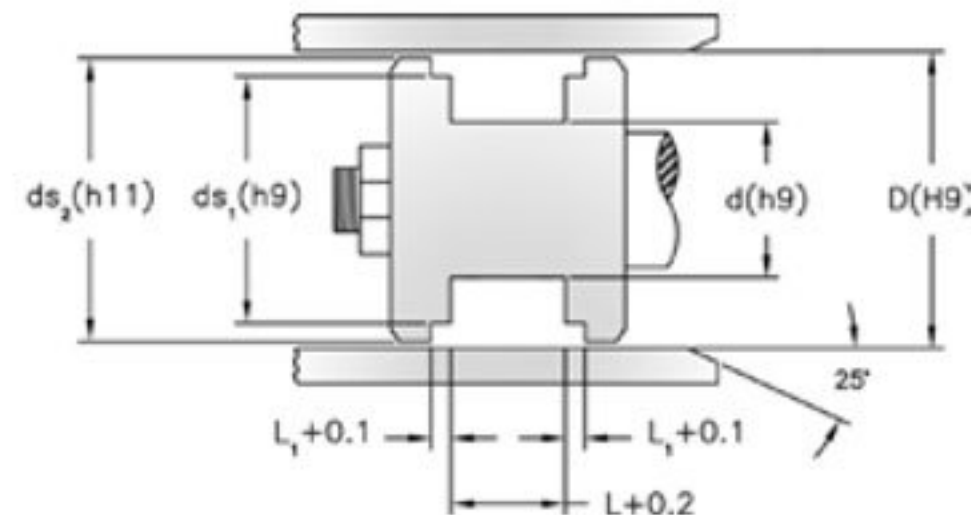
Application: Hydraulic double-acting piston seals
Material: POM, PA6

Standard Recommended Dimensions

D (Range)	d	H
38 - 40	D - 7.5	3.2
40.1 - 80	D - 11	4.2
80.1 - 135	D - 15.5	6.3
135.1 - 300	D - 21	8.1
300.1 - 394	D - 24.5	8.1

All Dimensions Are Millimeters

Compact Seal



Application: Hydraulic double-acting piston seals
Material: Urethane, NBR, PTFE, Fluorocarbon

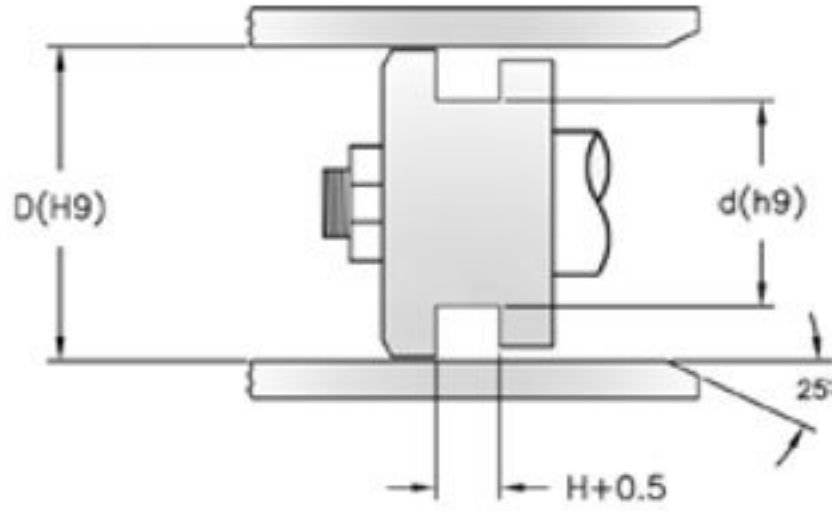
Standard Recommended Dimensions

D (Range)	d	ds ₁	L	L ₁
20 - 50	D - 10	D - 3	12.5	4
50.1 - 80	D - 15	D - 4	20	4
80.1 - 150	D - 20	D - 5	25	5.5
150.1 - 300	D - 25	D - 6	32	7
300.1 - 600	D - 30	D - 8	36	7

All Dimensions Are Millimeters

PISTON SEALS

Pneumatic U-Seal



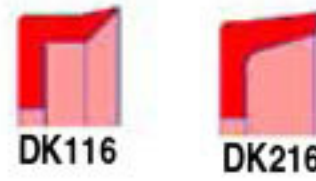
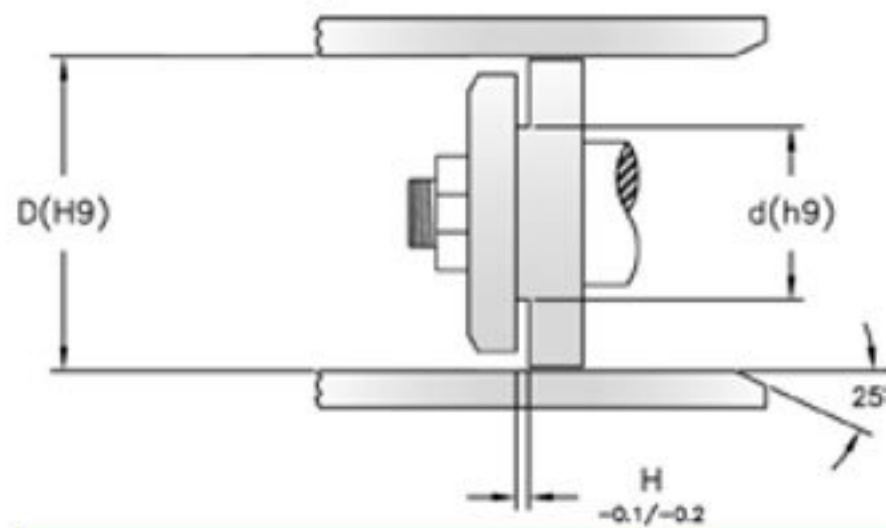
Pressure: 350 psi max
Application: Hydraulic and Pneumatic single-acting piston seals
Material: Urethane, NBR, PTFE, Fluorocarbon

Standard Recommended Dimensions

D (Range)	d	H
15 - 25	d - 8	6
25.1 - 50	d - 10	7
50.1 - 75	d - 12	8
75.1 - 150	d - 15	10
150.1 - 300	d - 20	12
300.1 - 450	d - 25	18
450.1 - 575	d - 30	20

All Dimensions Are Millimeters

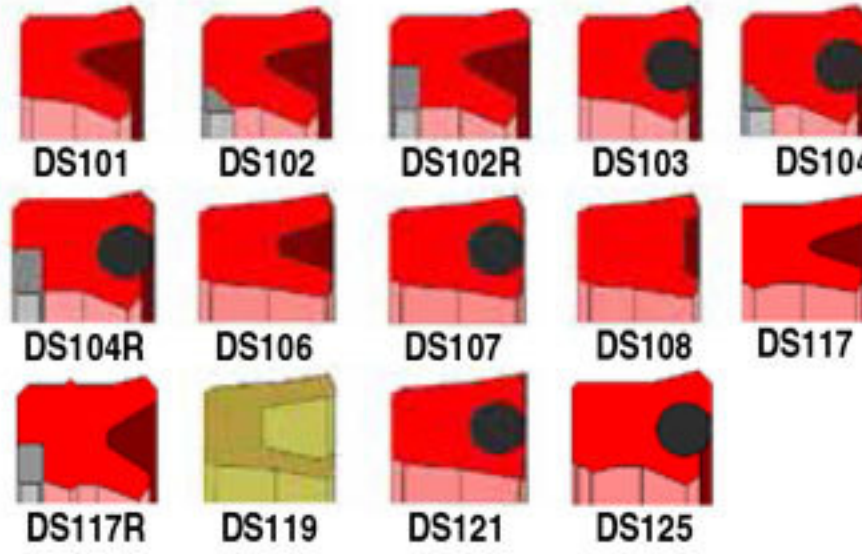
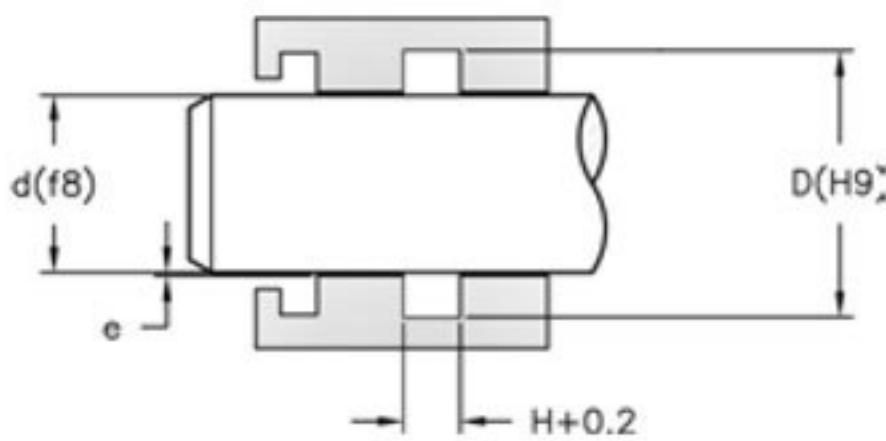
Piston Cup



Application: Hydraulic single acting piston seals
Material: Urethane, NBR, PTFE, Fluorocarbon

ROD SEALS

U-Seals



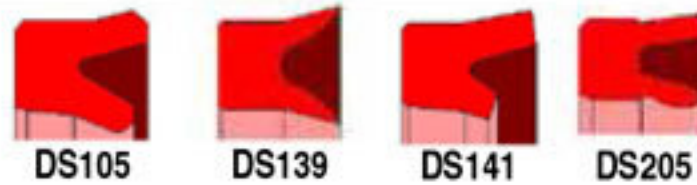
Application: Hydraulic single acting rod seals
Material: Urethane, NBR, PTFE, Fluorocarbon

Standard Recommended Dimensions

d (Range)	D	H
8 - 25	d + 8	6
25.1 - 50	d + 10	8
50.1 - 150	d + 15	10
150.1 - 300	d + 20	14
300.1 - 450	d + 25	17
450.1 - 575	d + 30	20

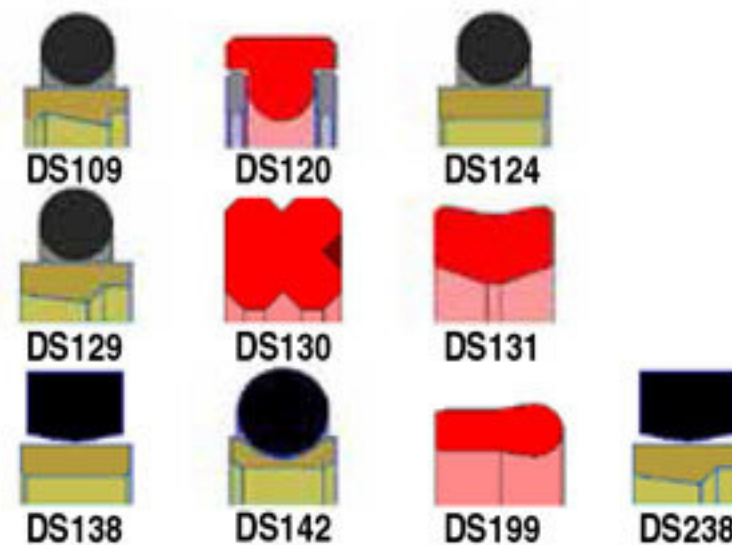
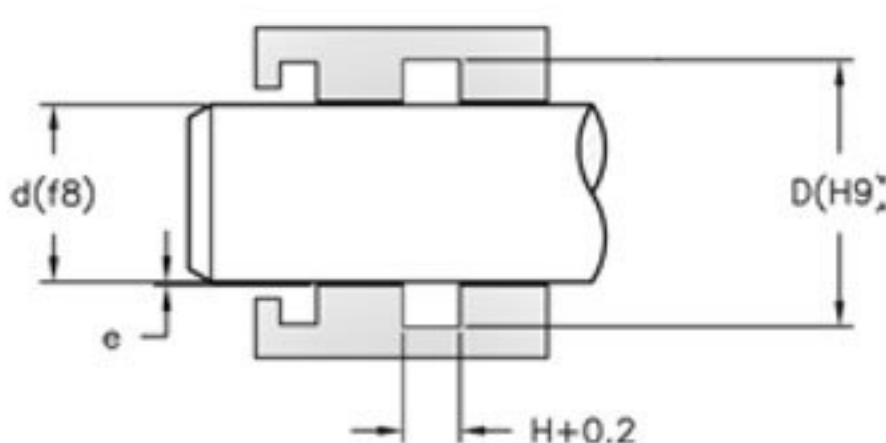
All Dimensions Are Millimeters

Pneumatic U-Seals



Pressure: 350 psi max
Application: Hydraulic and pneumatic single acting rod seals
Material: Urethane, NBR, PTFE, Fluorocarbon

One and Two Piece Seals



Application: Hydraulic double acting rod seals
Material: Urethane, NBR, PTFE, Fluorocarbon

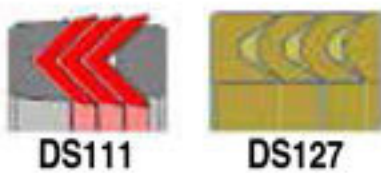
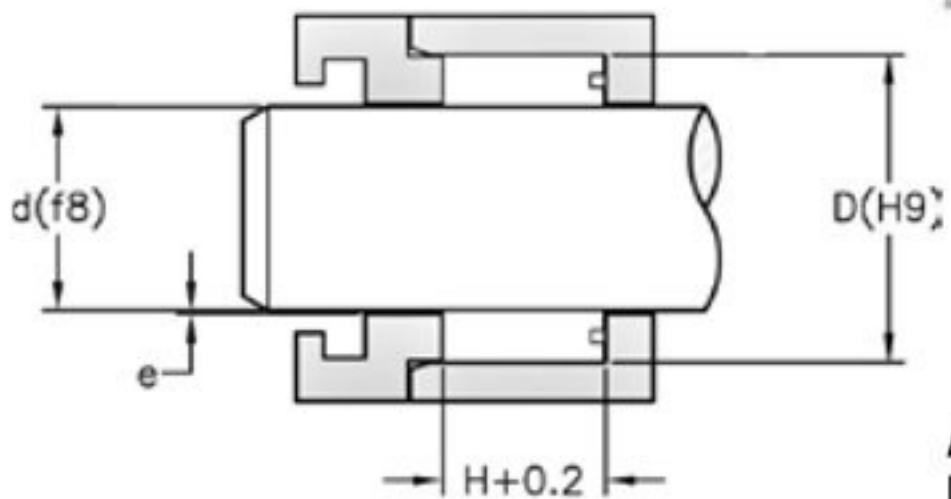
Standard Recommended Dimensions

d (Range)	D	H
8 - 10	d + 4.9	2.2
10.1 - 39	d + 10.7	4.2
39.1 - 199	d + 15.1	6.3
199.1 - 259	d + 20.5	8.1
259.1 - 575	d + 24	8.1

All Dimensions Are Millimeters

ROD SEALS

Vee Packing



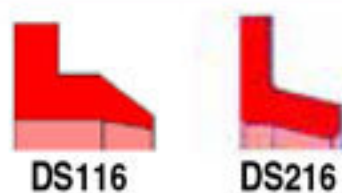
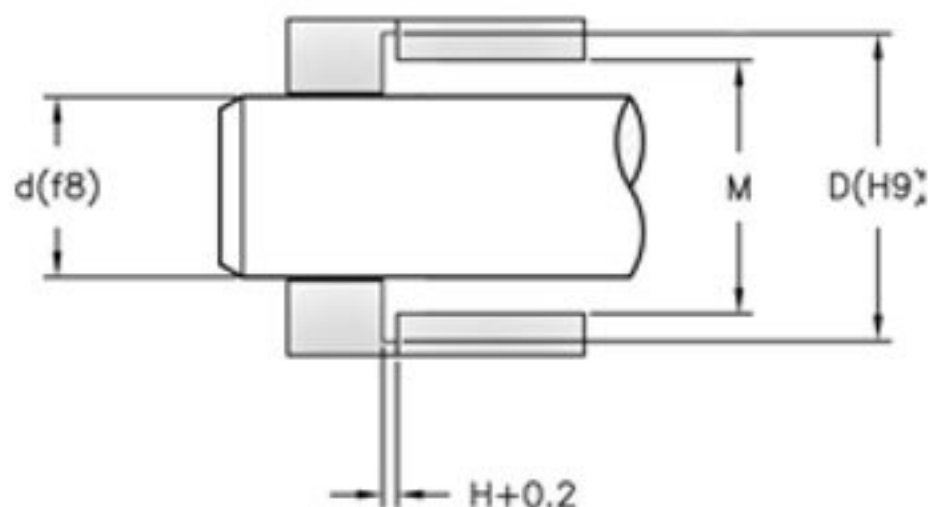
Application: Hydraulic single acting seals
Material: Urethane, NBR, PTFE, Fluorocarbon

Standard Recommended Dimensions

d (Range)	D	H
10 - 40	d + 10	16
40.1 - 75	d + 15	25
75.1 - 150	d + 20	32
150.1 - 200	d + 25	40
200.1 - 300	d + 30	50
300.1 - 575	d + 40	63

All Dimensions Are Millimeters

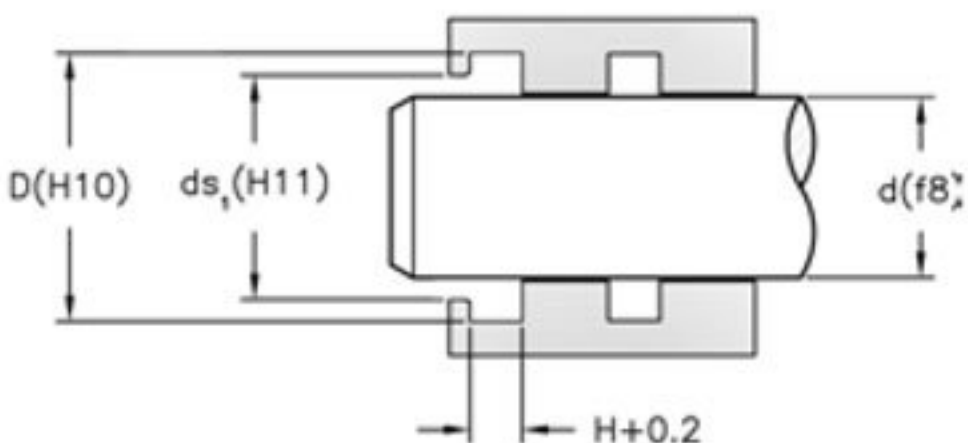
Rod Cup - Seal



Application: Hydraulic single acting rod seals
Material: Urethane, NBR, PTFE, Fluorocarbon

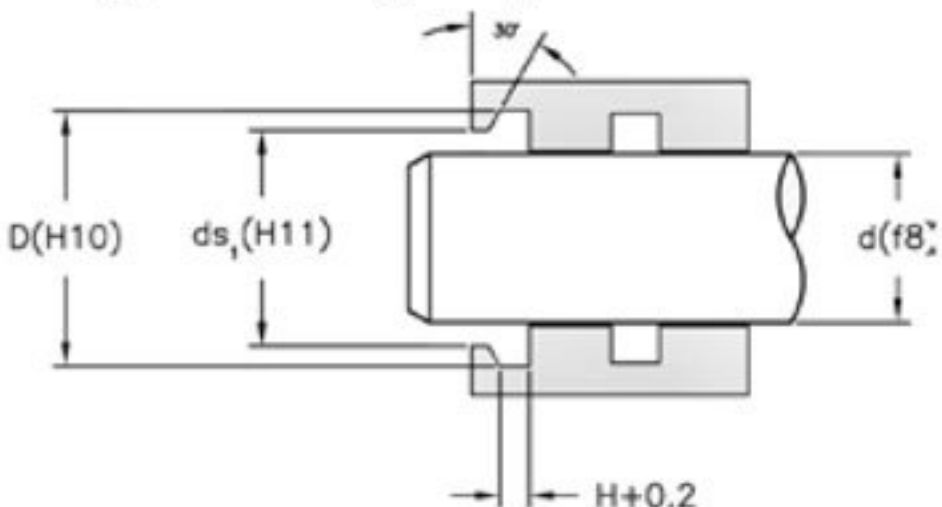
WIPERS

Single Acting Wipers



Application: Single acting wiper
Material: Urethane, NBR, PTFE, Fluorocarbon

Single Acting Wipers



Application: Single acting wiper
Material: Urethane, NBR, PTFE, Fluorocarbon

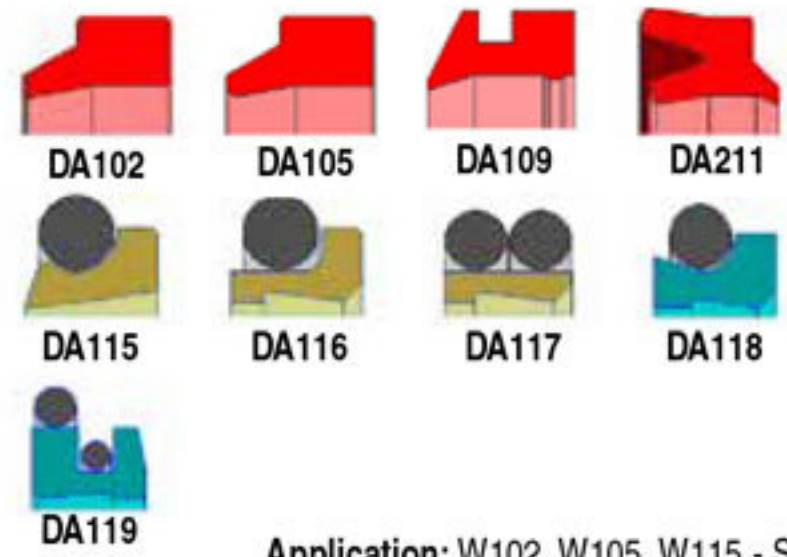
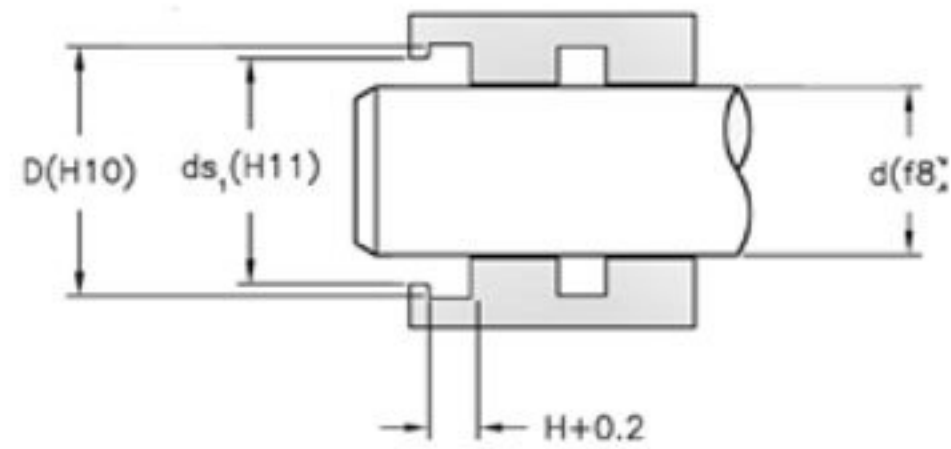
Standard Recommended Dimensions

d (Range)	D	H
8 - 50	d + 4	5
50.1 - 100	d + 5	5
100.1 - 575	d - 7.5	7

All Dimensions Are Millimeters

WIPERS

Single & Double Acting Wipers



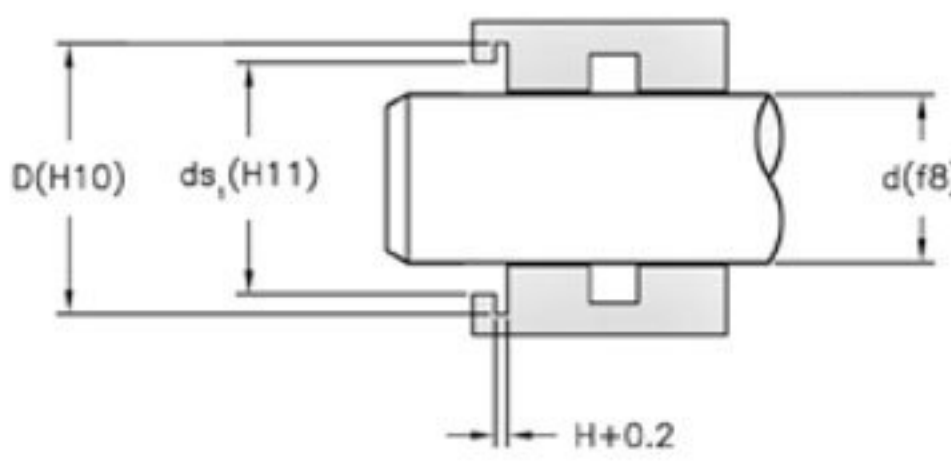
Standard Recommended Dimensions

d (Range)	D	H
8 - 50	d + 4	5
50.1 - 100	d + 5	5
100.1 - 575	d - 7.5	7

All Dimensions Are Millimeters

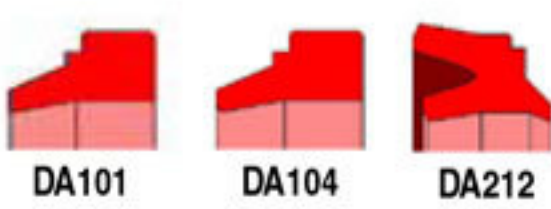
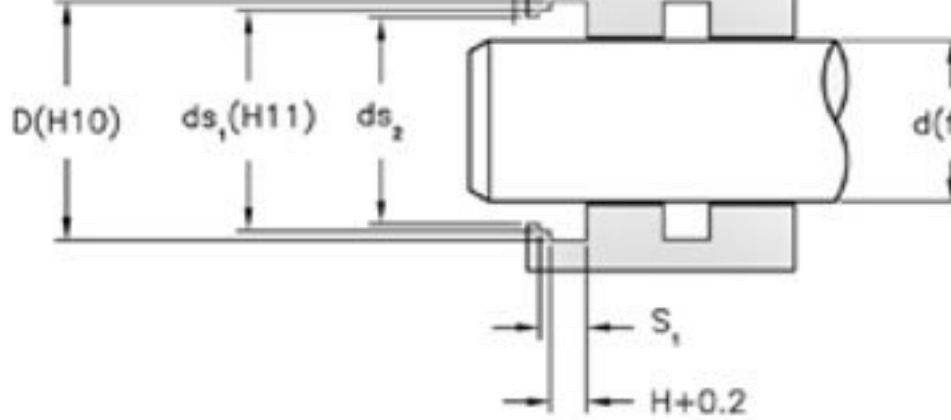
Application: W102, W105, W115 - Single acting wiper
 W111, W211, W116, W117 - Single and double acting wiper
Material: Urethane, NBR, PTFE, Fluorocarbon

Single Acting Wipers



Application: Single acting wiper
Material: Urethane, NBR, PTFE, Fluorocarbon

Single and Double Acting Wipers



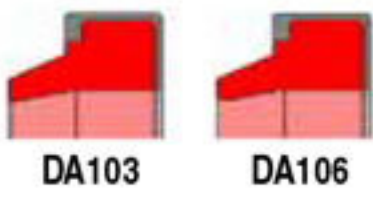
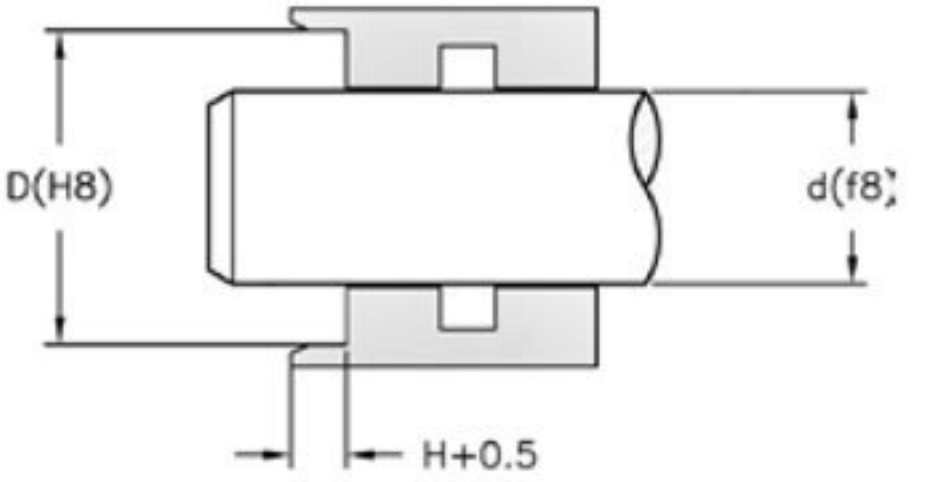
Standard Recommended Dimensions

d (Range)	D	S ₁
8 - 100	d + 8	4
100.1 - 150	d + 9	5.5
150 - 575	d + 11	6.5

All Dimensions Are Millimeters

Application: Single acting wiper
Material: Urethane, NBR, PTFE, Fluorocarbon

Single Acting Wipers



Standard Recommended Dimensions

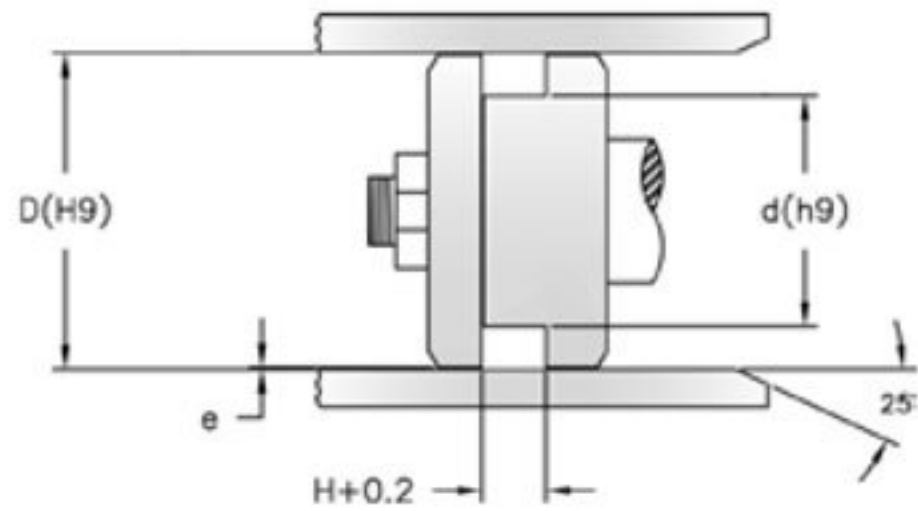
d (Range)	D	S ₁
8 - 10	d + 8	5
10.1 - 100	d + 9	7
100.1 - 200	d + 15	9
200.1 - 575	d + 20	12

All Dimensions Are Millimeters

Application: Single acting wiper
Material: Urethane, NBR, PTFE, Fluorocarbon

ROTARY PISTON SEALS

Piston Rotary Seal



Application: Hydraulic double acting piston seals
Material: Urethane, NBR, PTFE, Fluorocarbon

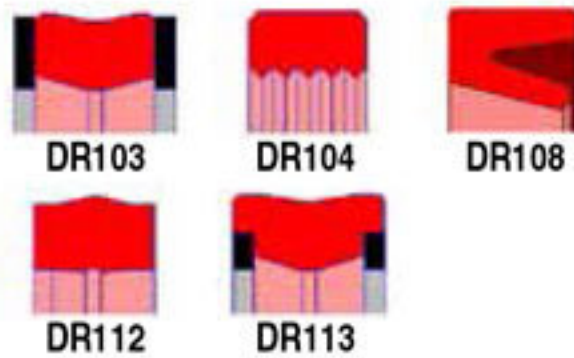
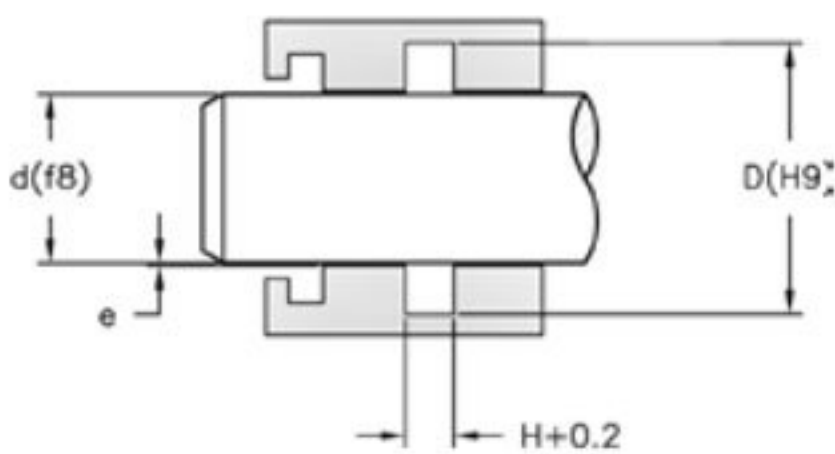
Standard Recommended Dimensions

D (Range)	d	H
10 - 20	D - 4.9	2.2
20.1 - 50	D - 7.5	3.2
50.1 - 150	D - 11	4.2
150.1 - 300	D - 15.5	6.3
300 - 600	D - 21	8.1

All Dimensions Are Millimeters

ROTARY SHAFT SEALS

Rod Rotary Seals



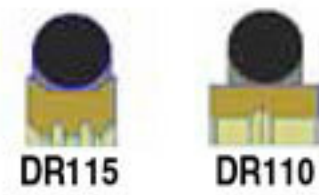
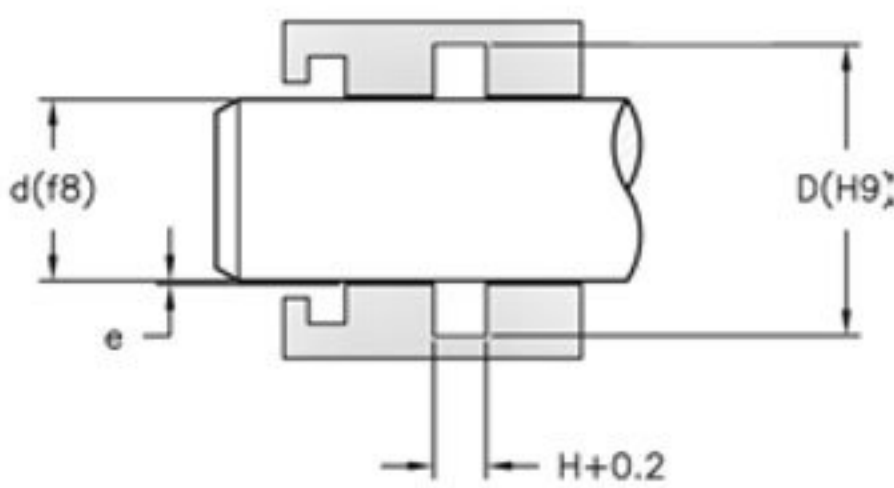
Application: Hydraulic double acting rod seals
Material: Urethane, NBR, PTFE, Fluorocarbon

Standard Recommended Dimensions

D (Range)	D	H
8 - 10	d + 4.9	2.2
10.1 - 39	d + 10.7	4.2
39.1 - 199	d + 15.1	6.3
199.1 - 259	d + 20.5	8.1
259 - 575	d + 25	8.1

All Dimensions Are Millimeters

Rod Rotary Seals



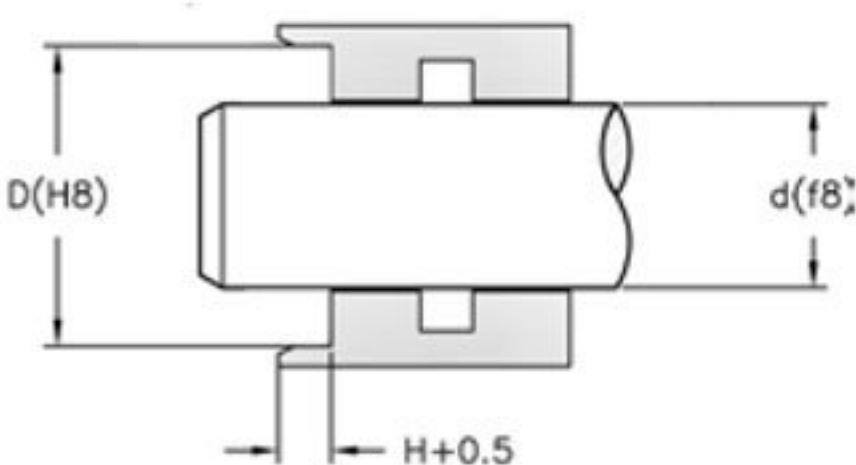
Application: Hydraulic double acting rod seals
Material: Urethane, NBR, PTFE, Fluorocarbon

Standard Recommended Dimensions

d (Range)	D	H
8 - 20	d + 4.9	2.2
20.1 - 50	d + 7.5	3.2
50.1 - 150	d + 11	4.2
150.1 - 300	d + 15.5	6.3
300.1 - 575	d + 21	8.1

All Dimensions Are Millimeters

Shaft Seals



Application: Hydraulic single acting shaft seals
Material: NBR, Fluorocarbon, PTFE

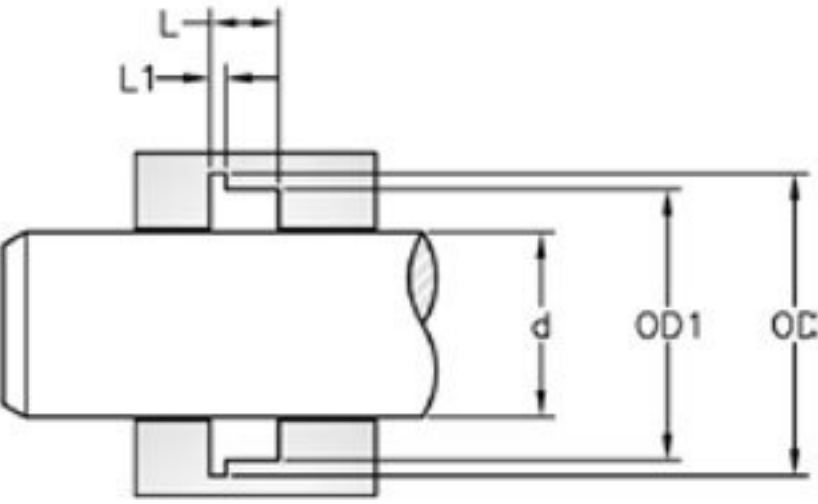
Standard Recommended Dimensions

d (Range)	D	H
10 - 60	d + 12	7
60.1 - 140	d + 15	8
14.1 - 300	d + 20	10
300.1 - 450	d + 30	12
450.1 - 575	d + 40	20

All Dimensions Are Millimeters

ROTARY SHAFT SEALS

Spring Activated Shaft Seal



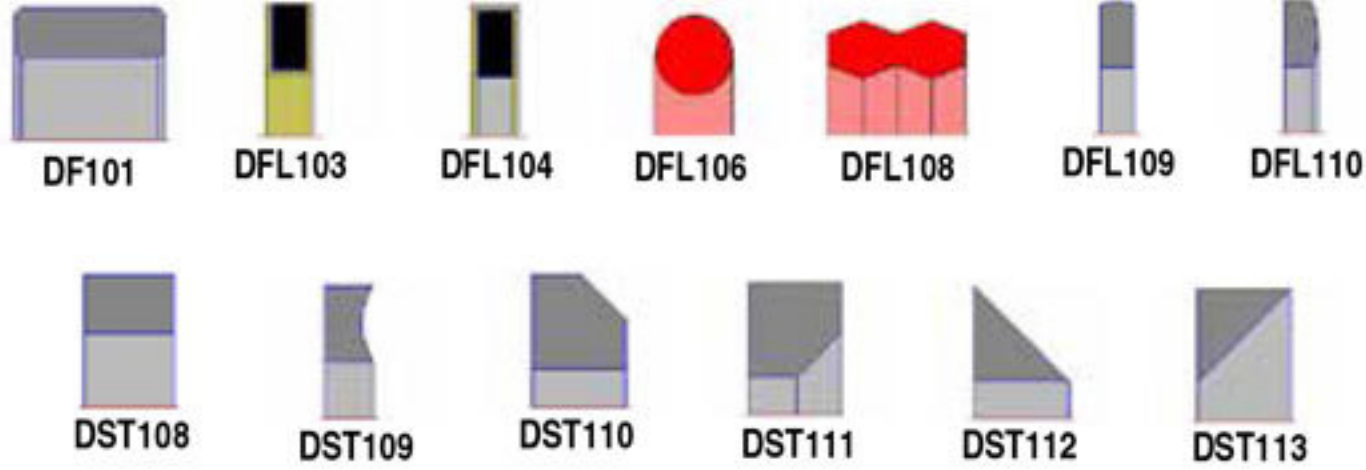
Standard Recommended Dimensions

d (Range)	OD	OD ₁	L	L ₁
8 - 20	d + 9	d + 5	36	0.85
50.1 - 80	d + 12.5	d + 7	4.8	1.35
80.1 - 150	d + 17.5	d + 10.5	7.1	1.8
150.1 - 300	d + 22	d + 14	9.5	2.8

All Dimensions Are Millimeters

Application: Hydraulic single acting shaft seals
Material: PTFE

GASKET / BACK-UP RINGS



GUIDE-RINGS

